



MEDINA
COMPREHENSIVE
PLAN
2021

Steering Committee Meeting – February 23rd, 2022

Agenda

- Welcome
- What We Heard Last Time (SC4)
- Draft Comprehensive Plan Elements
 - Future Land Use Map
 - Future Active Transportation Map
 - Plan Framework (Vision/Principal Statements, Goals, & Objectives)
 - Focus Area Concepts
- Group Exercises
- Next Steps

Welcome!

What We Heard Last Time

*Its not that things go
wrong; it is how you
recover.*

SC4 Recap – Steering Committee

North Court Focus Area

rethink/recalibrate.

West Liberty Focus Area

adjust lane widths and align graphics with existing built environment.

East Smith Focus Area

incorporate city property into concept and adjust building height on East Smith.

South Downtown Focus Area

rethink/recalibrate land use concept and re-examine Mill Street connectivity plan and Farmer's Exchange plaza.

SC4 Recap – Staff

Future Land Use Map

breakdown “suburban corridor” land use category and adjust specific parcels.

Future Active Transportation Map

simplify proposed future connections and adjust existing routes.

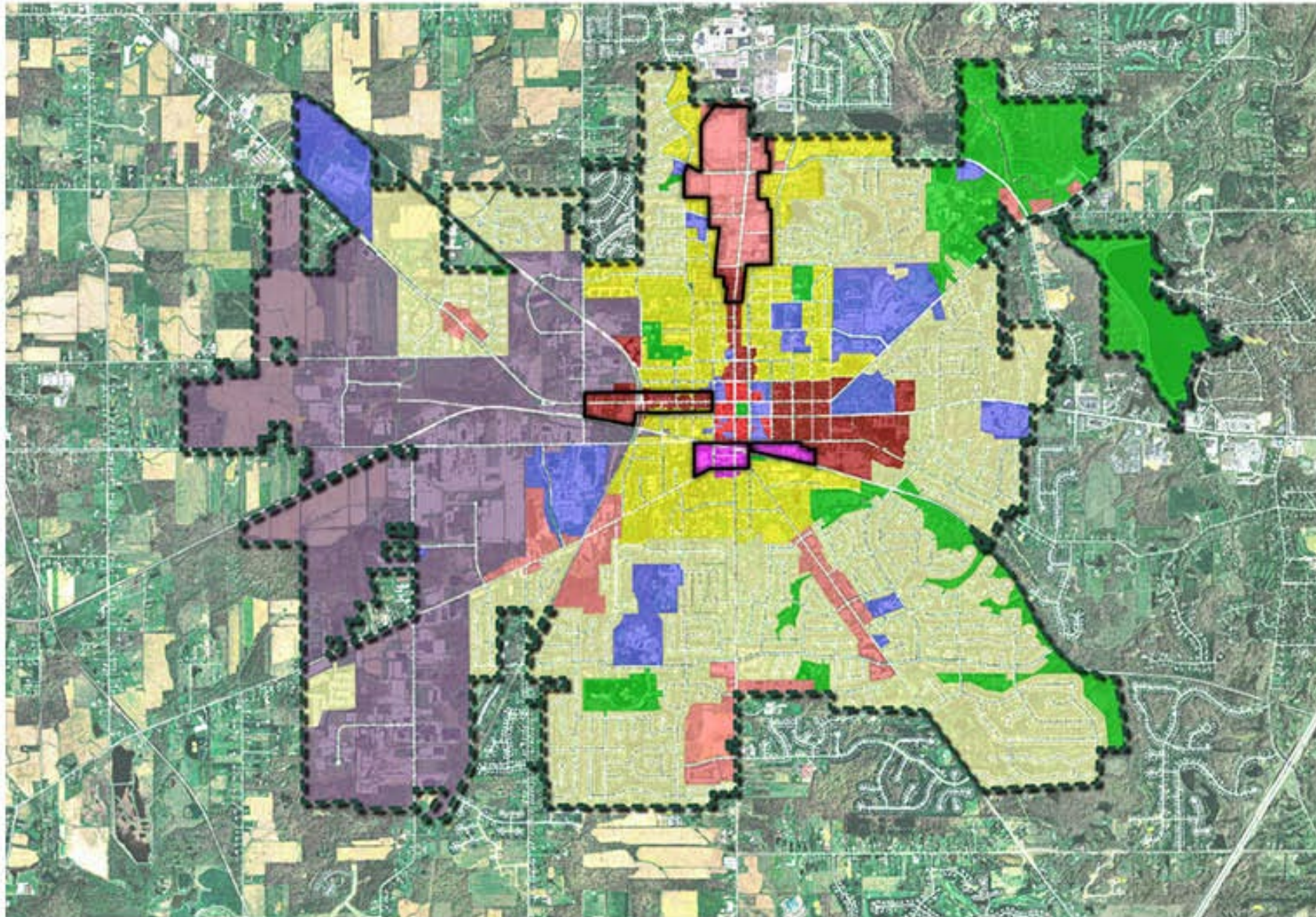
Plan Framework

Reviewed and completed the plan objectives and strategies.

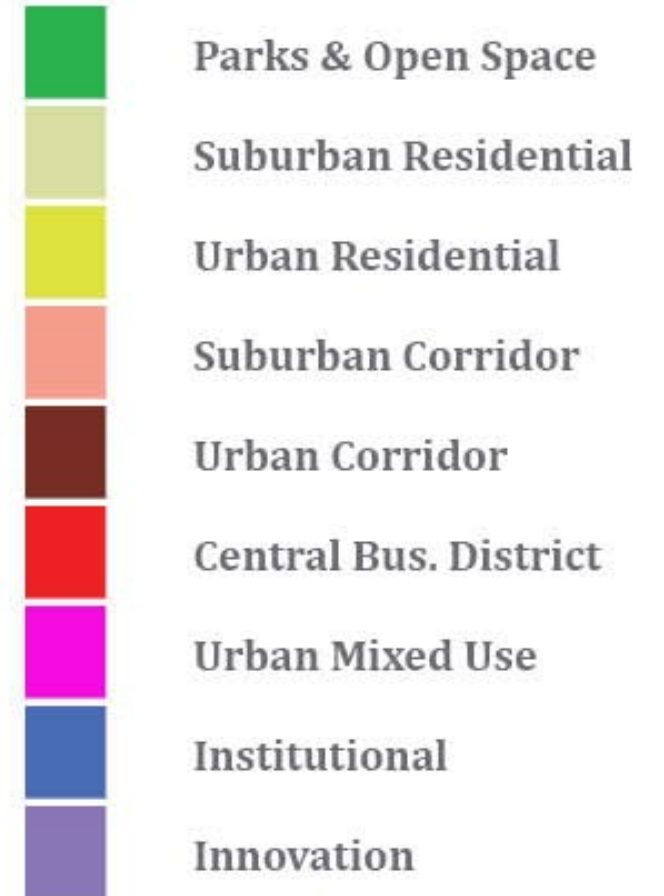
Draft Comprehensive Plan Elements

Future Land Use Map

Future Land Use Map 1.0



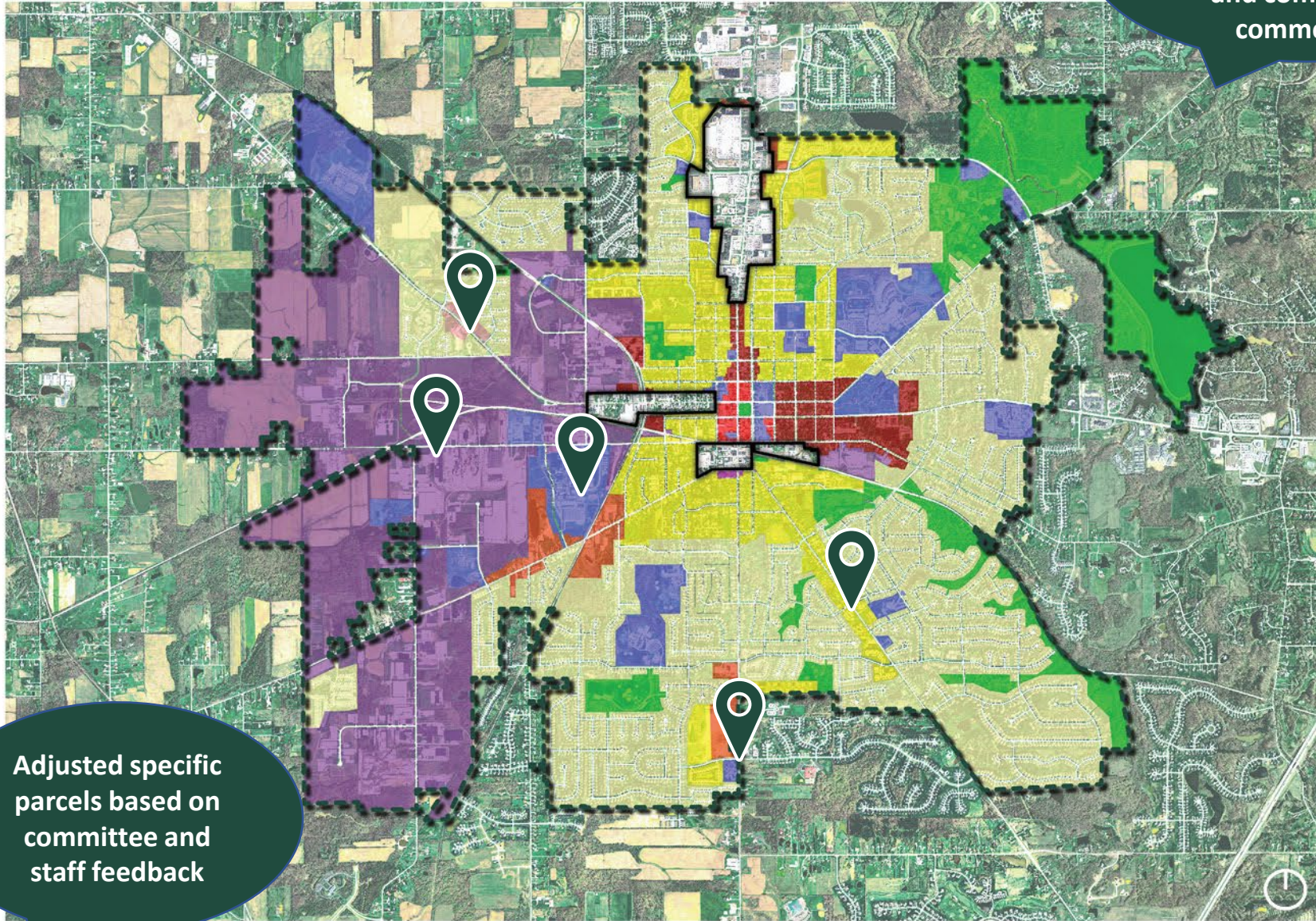
Future Land Use Map - Draft













Future Land Use Map 2.0

Broke down
"suburban corridor"
into neighborhood
and community
commercial

Future Land Use Map - Draft

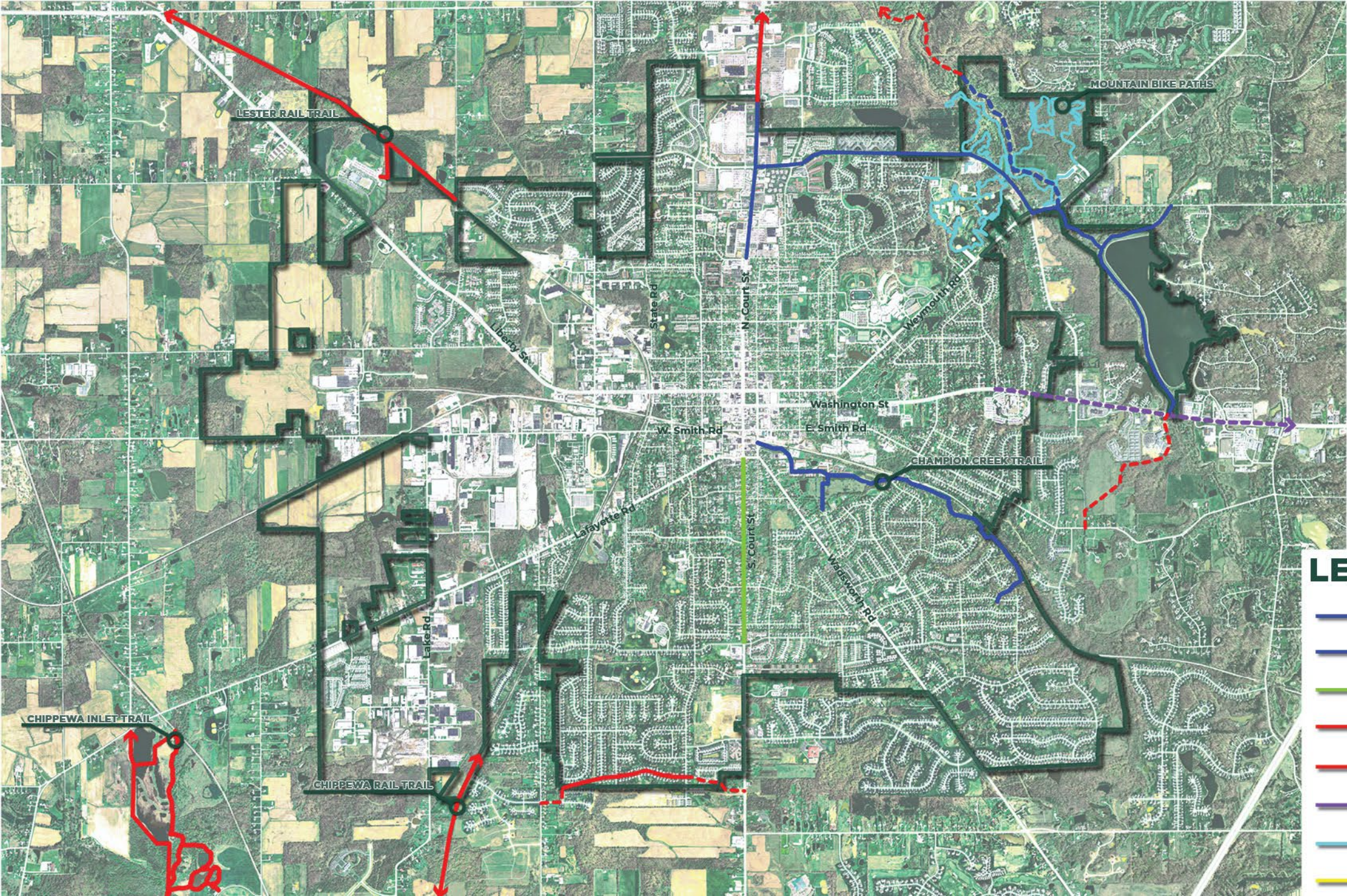


-  Parks & Open Space
-  Suburban Residential
-  Urban Residential
-  Neighborhood Commercial
-  Community Commercial
-  Downtown Corridor
-  Central Bus. District
-  Mixed Use
-  Institutional
-  Innovation

Adjusted specific
parcels based on
committee and
staff feedback









Draft Comprehensive Plan Elements

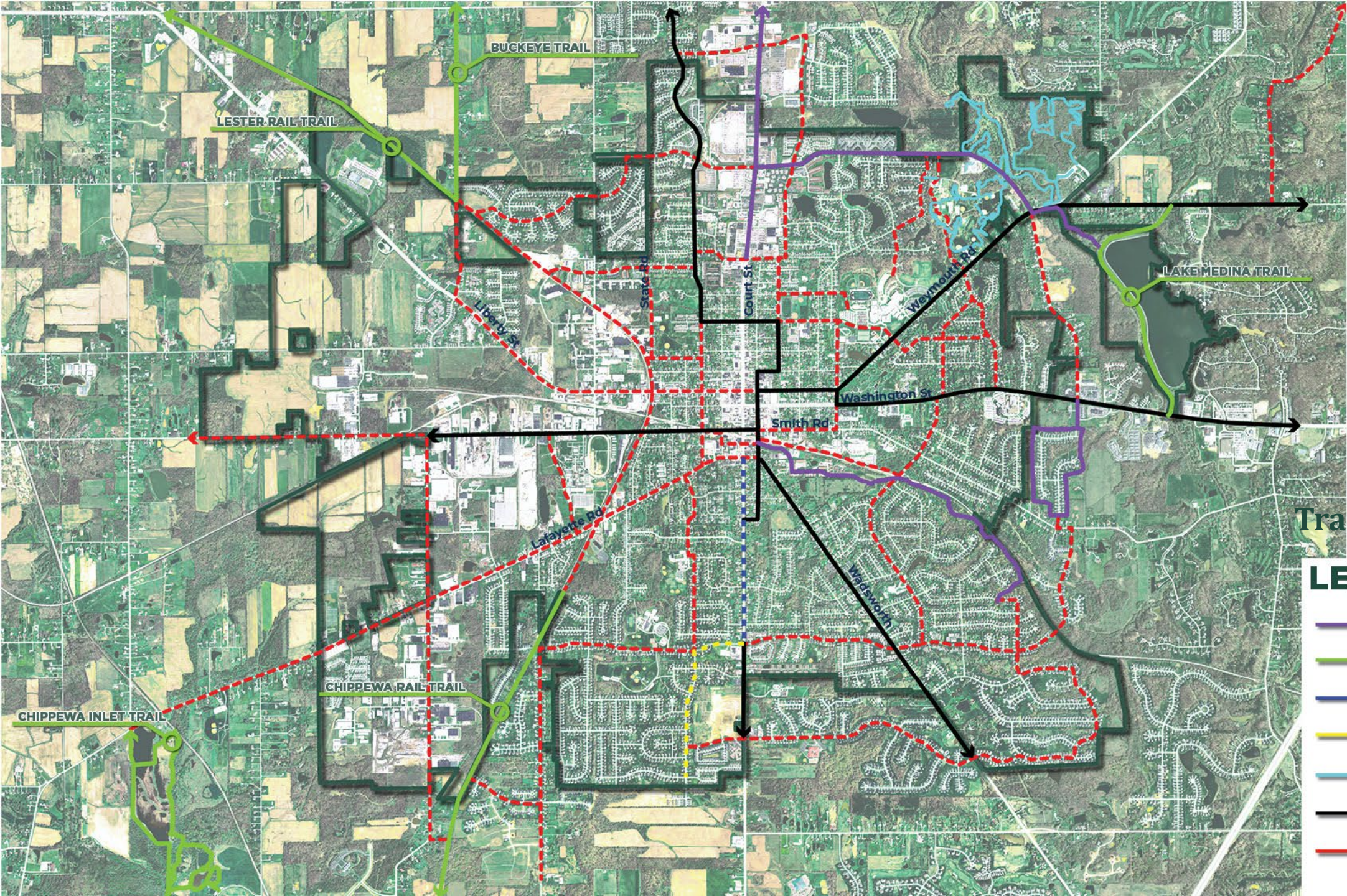
Future Active Transportation Map



Existing Transportation

LEGEND

-  CITY - EXISTING PATH
-  CITY- FUTURE PATH
-  CITY - BIKE LANE
-  COUNTY - EXISTING PATH
-  COUNTY - FUTURE PATH
-  ODOT - FUTURE PATH
-  MOUNTAIN BIKE PATH
-  PROPOSED TRAILS



Proposed Transportation 1.0

LEGEND

-  ALL PURPOSE TRAIL
-  HIKE/BIKE TRAIL
-  BIKE LANE
-  SIGNED/SHARROW
-  MOUNTAIN BIKE
-  PLANNED ROUTES
-  PROPOSED ROUTES



Proposed Transportation 2.0

LEGEND

-  CITY - EXISTING PATH
-  CITY- FUTURE PATH
-  CITY - BIKE LANE
-  COUNTY - EXISTING PATH
-  COUNTY - FUTURE PATH
-  ODOT - FUTURE PATH
-  MOUNTAIN BIKE PATH
-  PROPOSED TRAILS

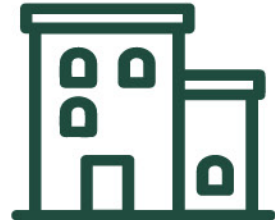
Draft Comprehensive Plan Elements

Plan Framework

The Plan Elements



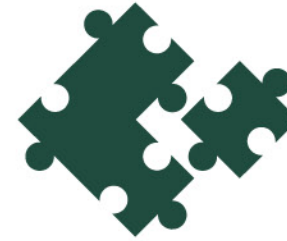
MOBILITY



HOUSING



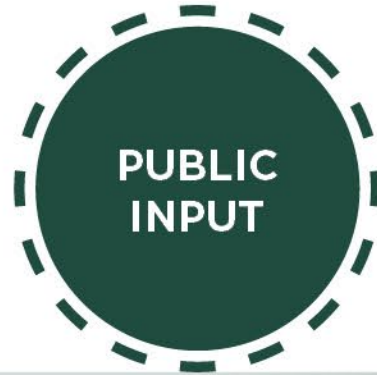
ECONOMIC
DEVELOPMENT &
STABILIZATION



LAND USE



QUALITY OF
LIFE



The Plan Framework



5 plan elements
22 objectives
52 strategies

*See your handout
for the full plan
framework outline.*

Draft Comprehensive Plan Elements

Focus Area Concepts

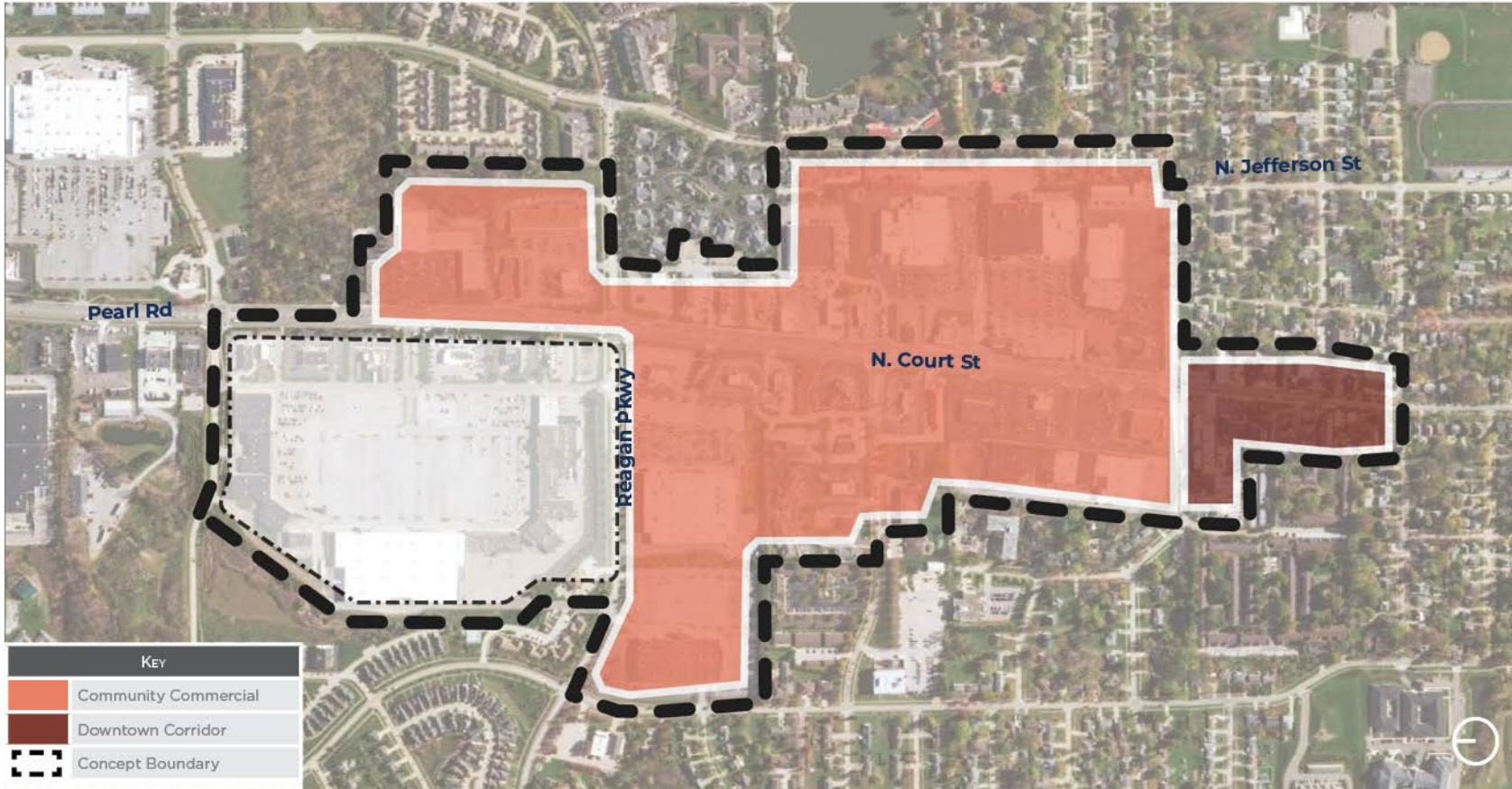


North Court Corridor

N. COURT CORRIDOR: BOUNDARY



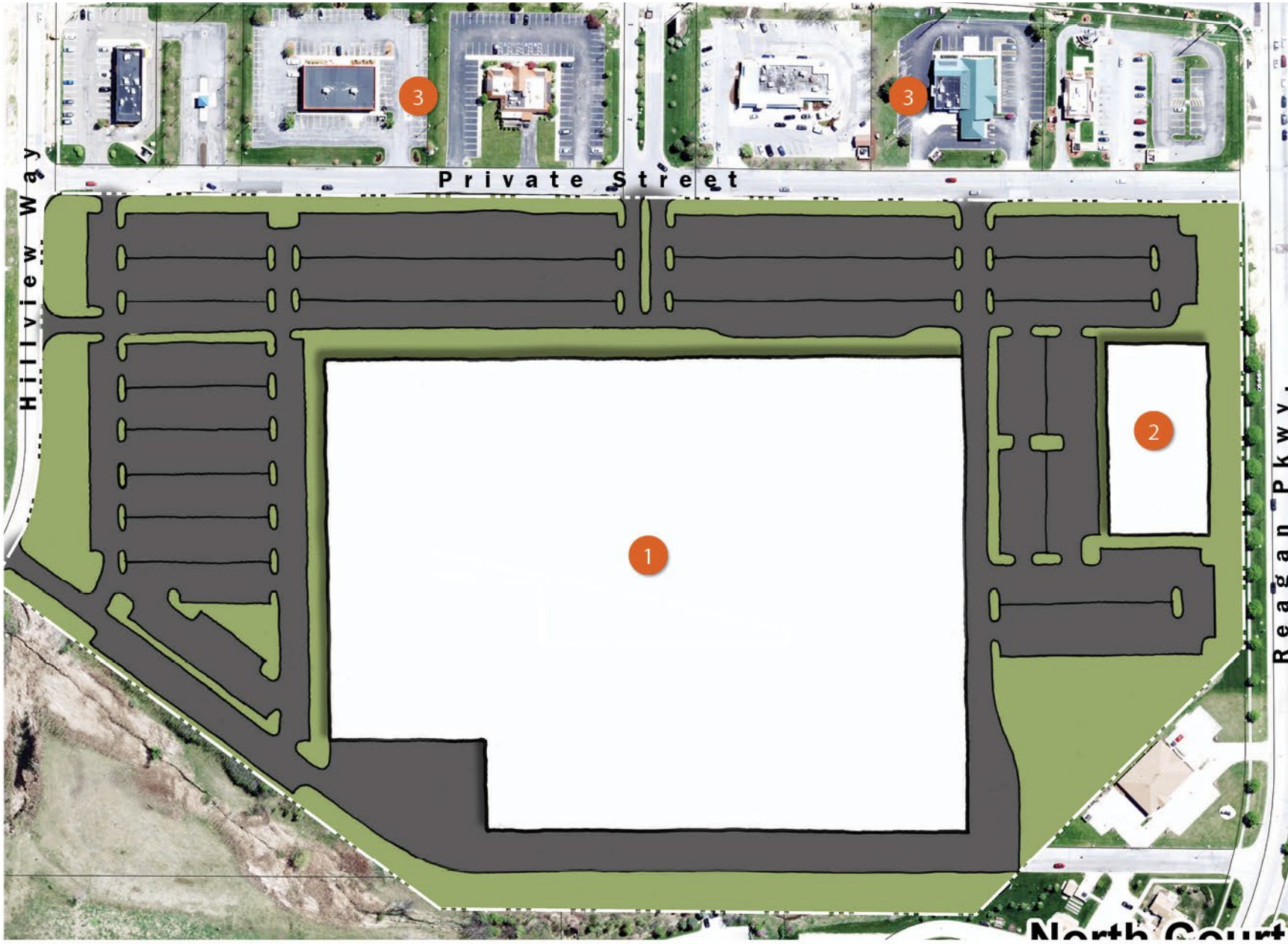
N. COURT CORRIDOR: BUBBLE DIAGRAM



N. COURT CORRIDOR: CONCEPT BUBBLE



Key	
	Commercial
	Recreational
	Residential - Townhomes



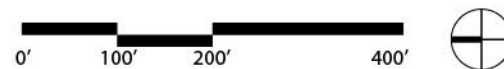
LEGEND :

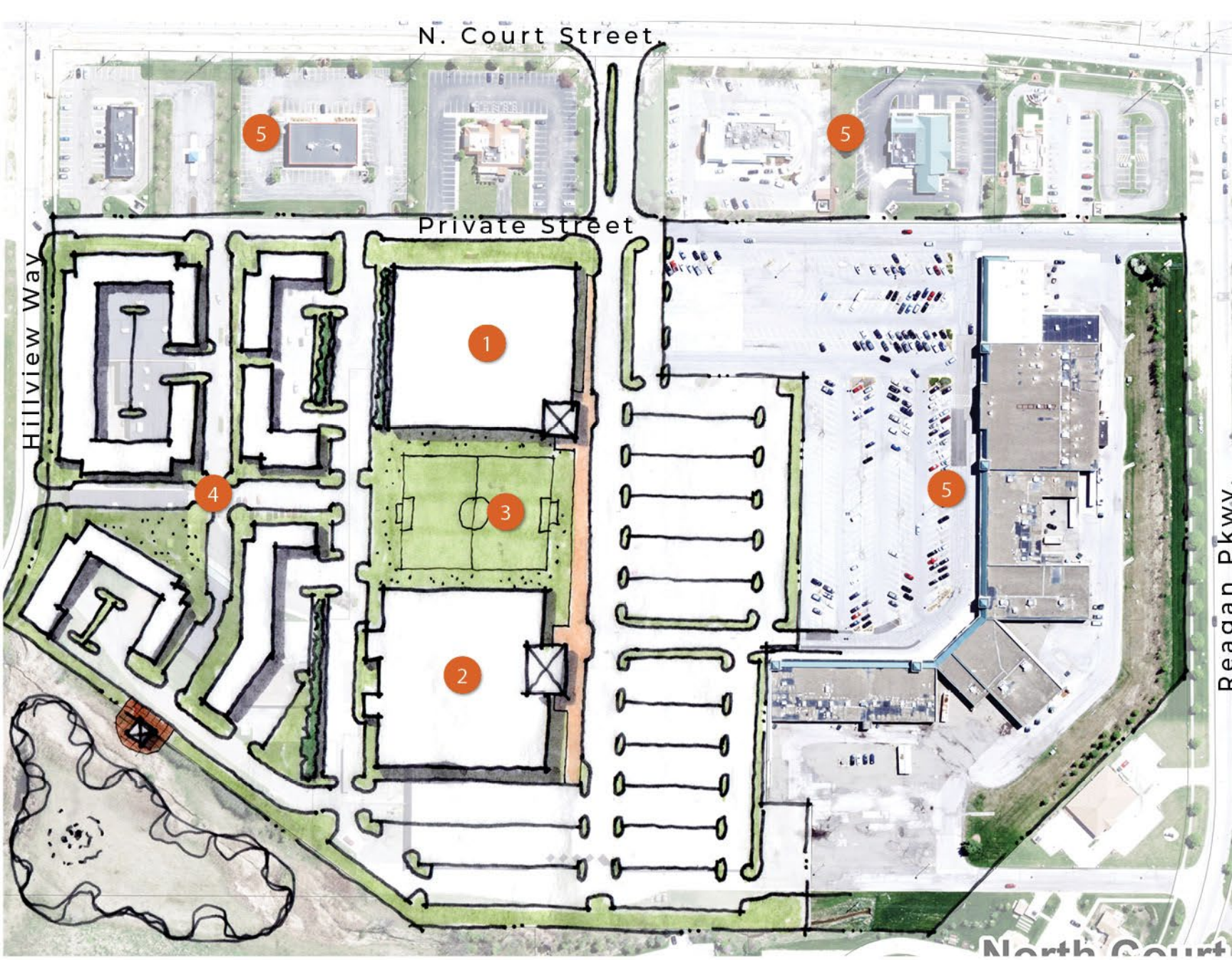
- 1** Multisport Fieldhouse
(2 story massing)
- 2** Medical Office (2 story)
- 3** Existing Outparcels

DEVELOPMENT DATA

Sports Facility: ± 560,000 sq.ft.
 Medical Office: ± 37,000 sq.ft.

NORTH COURT CONCEPT - Version 1.0





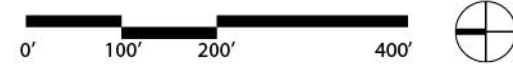
LEGEND :

- 1 Multisport Fieldhouse
- 2 Ice Rink: 2 sheets
- 3 Outdoor training field
- 4 Townhomes
- 5 Existing Commercial to Remain

DEVELOPMENT DATA

Field House:	± 62,000 sq.ft.
Ice Rink:	± 69,000 sq.ft.
Townhomes:	± 109 du

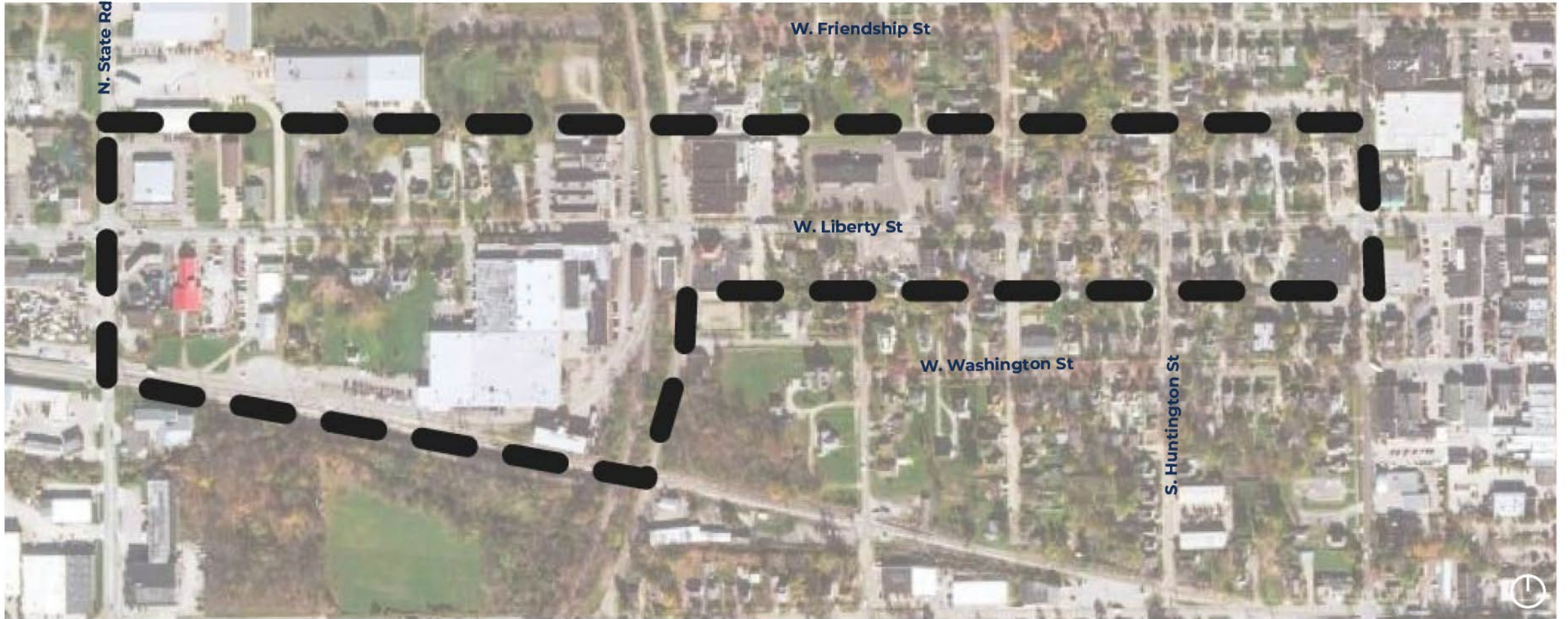
NORTH COURT CONCEPT - Version 2.0



A photograph of a street corner in West Liberty, Ohio. The main building is a two-story brick structure with multiple windows, some of which are arched. A utility pole with power lines stands on the left side of the street. In the foreground, there is a paved road and a landscaped area with plants and a street lamp. The text "West Liberty Corridor" is overlaid in the center of the image in a white, sans-serif font.

West Liberty Corridor

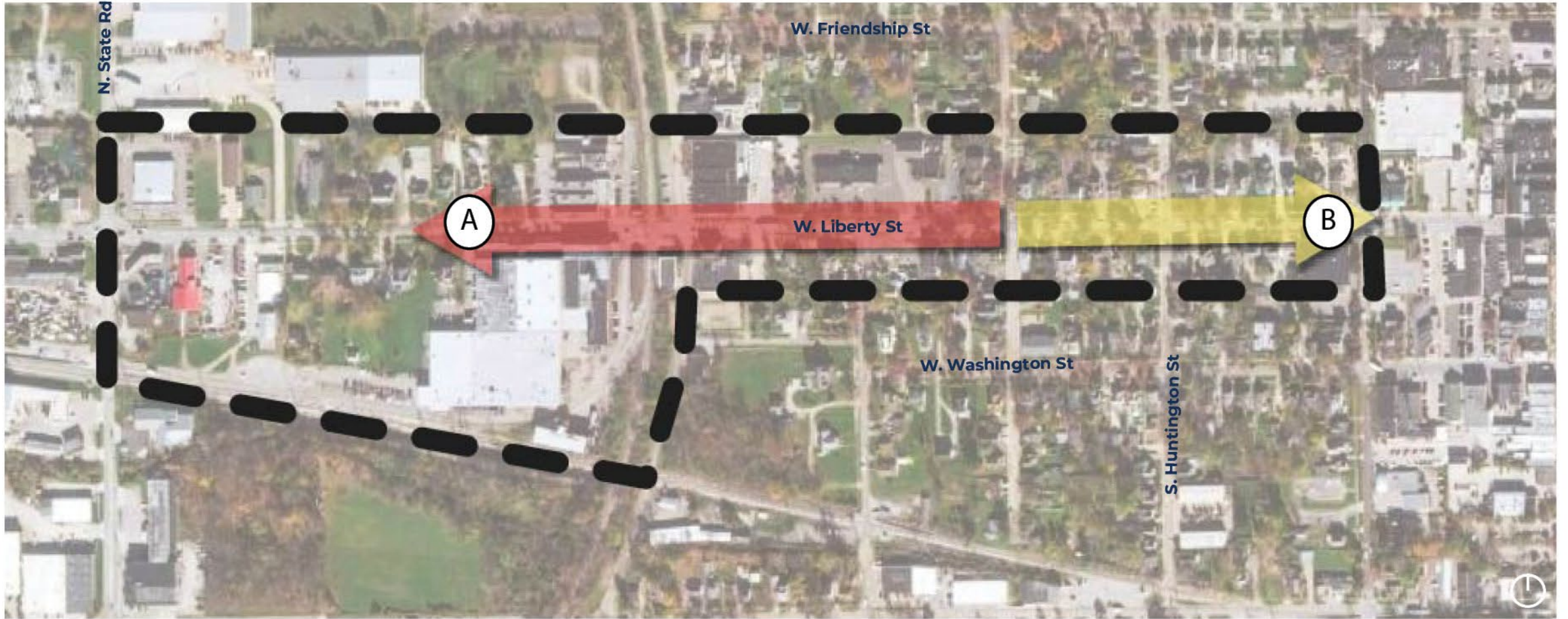
WEST LIBERTY CORRIDOR: BOUNDARY



WEST LIBERTY: BUBBLE DIAGRAM

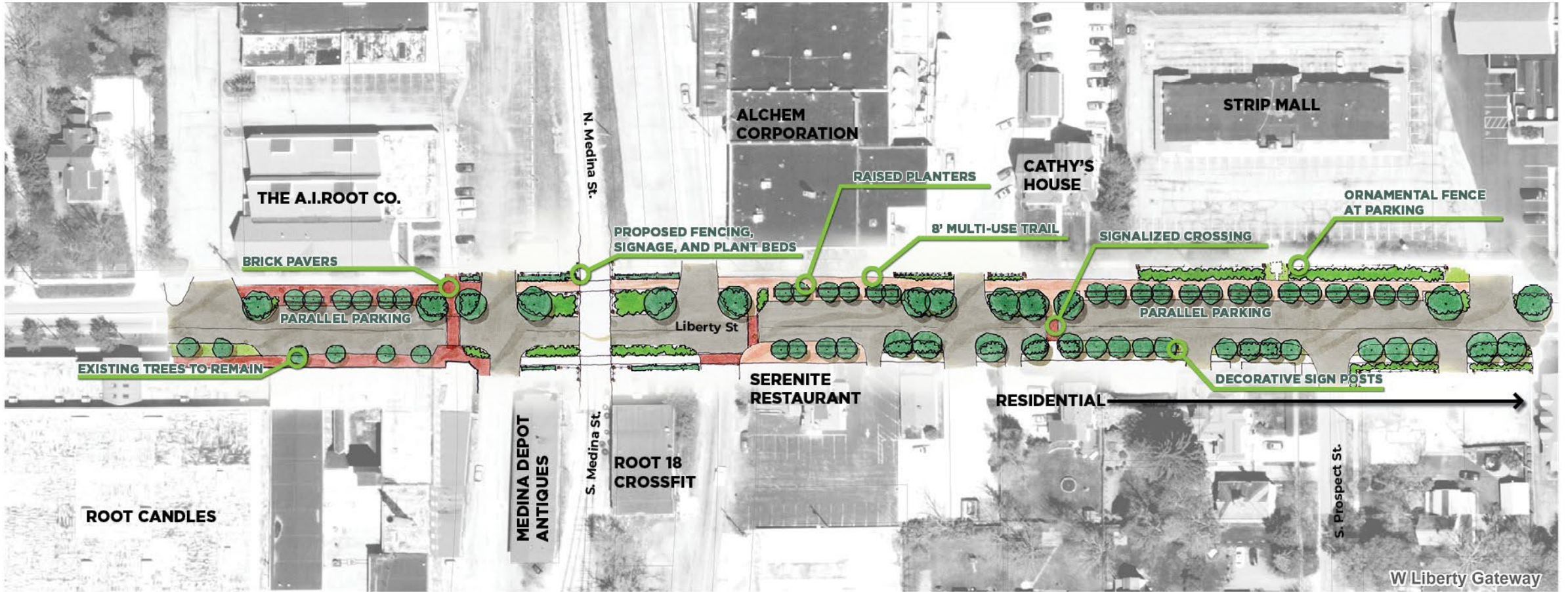


WEST LIBERTY STREETScape KEY



WEST LIBERTY STREETScape: PLAN VIEW

Proposed Commercial Streetscape



WEST LIBERTY STREETScape: PLAN VIEW

Proposed Residential Streetscape



A

Existing Commercial Streetscape

MEDINA
COMPREHENSIVE
PLAN
2021



EXISTING
ROW : ±65'

Previous version



PROPOSED ROW : ±65'	WIDEN SIDEWALK ±6'	STREETScape AMENITY ZONE ±11'	DRIVE LANE ±11'	DRIVE LANE ±11'	PARKING LANE ±9'	STREETScape AMENITY ZONE ±9'	MULTI-USE PATH ±8'
	EXISTING ROW : ±65'	WIDEN SIDEWALK ±5'	STREETScape AMENITY ZONE ±12'	DRIVE LANE ±15'	DRIVE LANE ±15'	STREETScape AMENITY ZONE ±13'	WIDEN SIDEWALK ±5'

A

Proposed Commercial Streetscape (Looking West)



PROPOSED ROW : ±65'	WIDEN SIDEWALK ±6'	STREETSCAPE AMENITY ZONE ±10'	DRIVE LANE ±12'	DRIVE LANE ±12'	PARKING LANE ±9'	STREETSCAPE AMENITY ZONE ±8'	MULTI-USE PATH ±8'
EXISTING ROW : ±65'	WIDEN SIDEWALK ±5'	STREETSCAPE AMENITY ZONE ±12'	DRIVE LANE ±15'	DRIVE LANE ±15'		STREETSCAPE AMENITY ZONE ±13'	WIDEN SIDEWALK ±5'

B

Existing Residential Streetscape



EXISTING
ROW : ±65'

Previous version



MULTI-USE TRAIL ±8'	STREETSCAPE AMENITY ZONE ±9'	PARKING LANE ±9'	DRIVE LANE ±11'	DRIVE LANE ±11'	STREETSCAPE AMENITY ZONE ±11'	WIDEN SIDEWALK ±6'	PROPOSED ROW : ±65'
SIDEWALK ±5'	STREETSCAPE AMENITY ZONE ±13'	DRIVE LANE ±15'		DRIVE LANE ±15'	STREETSCAPE AMENITY ZONE ±12'	SIDEWALK ±5'	

B

Proposed Residential Streetscape (Looking West)

COMPREHENSIVE
PLAN
2021



Drive lane widths increased to 12 feet

WIDEN SIDEWALK $\pm 6'$	STREETSCAPE AMENITY ZONE $\pm 9'$	DRIVE LANE $\pm 12'$	DRIVE LANE $\pm 12'$	PARKING LANE $\pm 9'$	STREETSCAPE AMENITY ZONE $\pm 9'$	MULTI-USE TRAIL $\pm 8'$	PROPOSED ROW : $\pm 65'$
SIDEWALK $\pm 5'$	STREETSCAPE AMENITY ZONE $\pm 13'$	DRIVE LANE $\pm 15'$	DRIVE LANE $\pm 15'$	STREETSCAPE AMENITY ZONE $\pm 12'$	SIDEWALK $\pm 5'$	EXISTING ROW : $\pm 65'$	

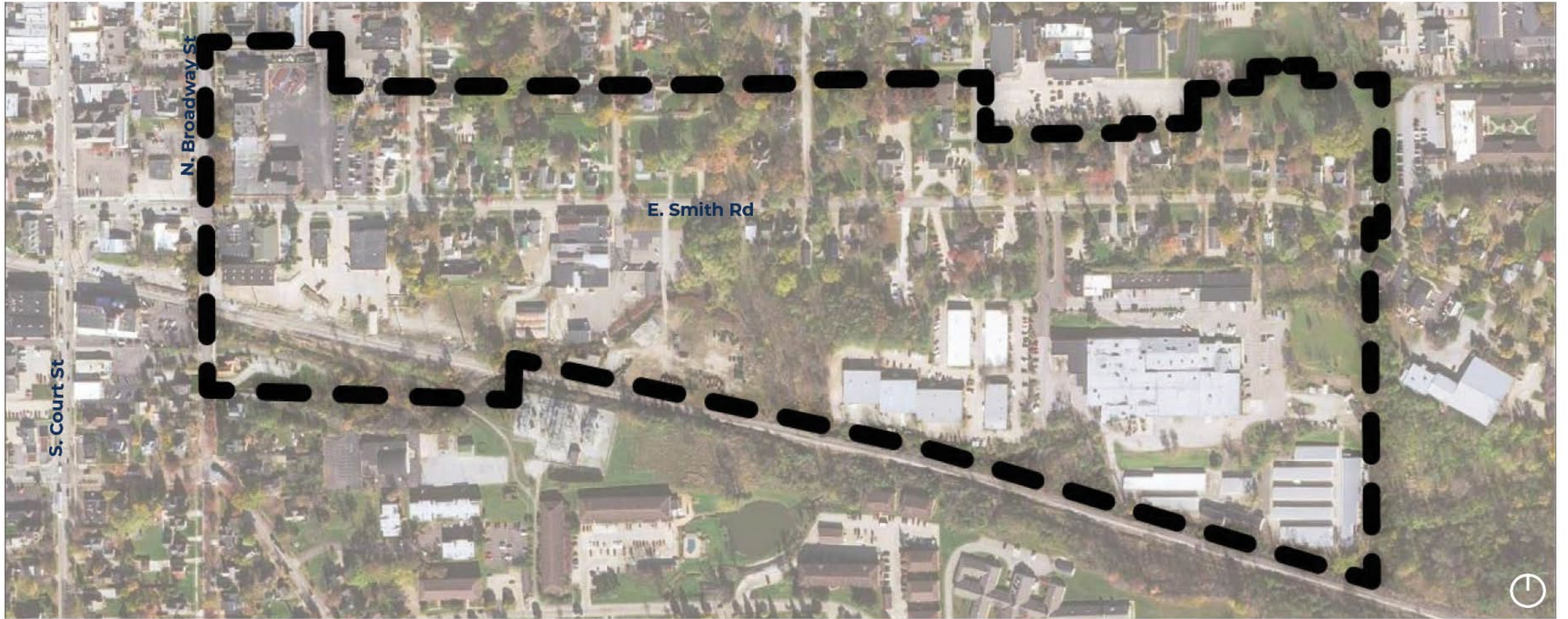
WEST LIBERTY STREETScape: CHARACTER IMAGES



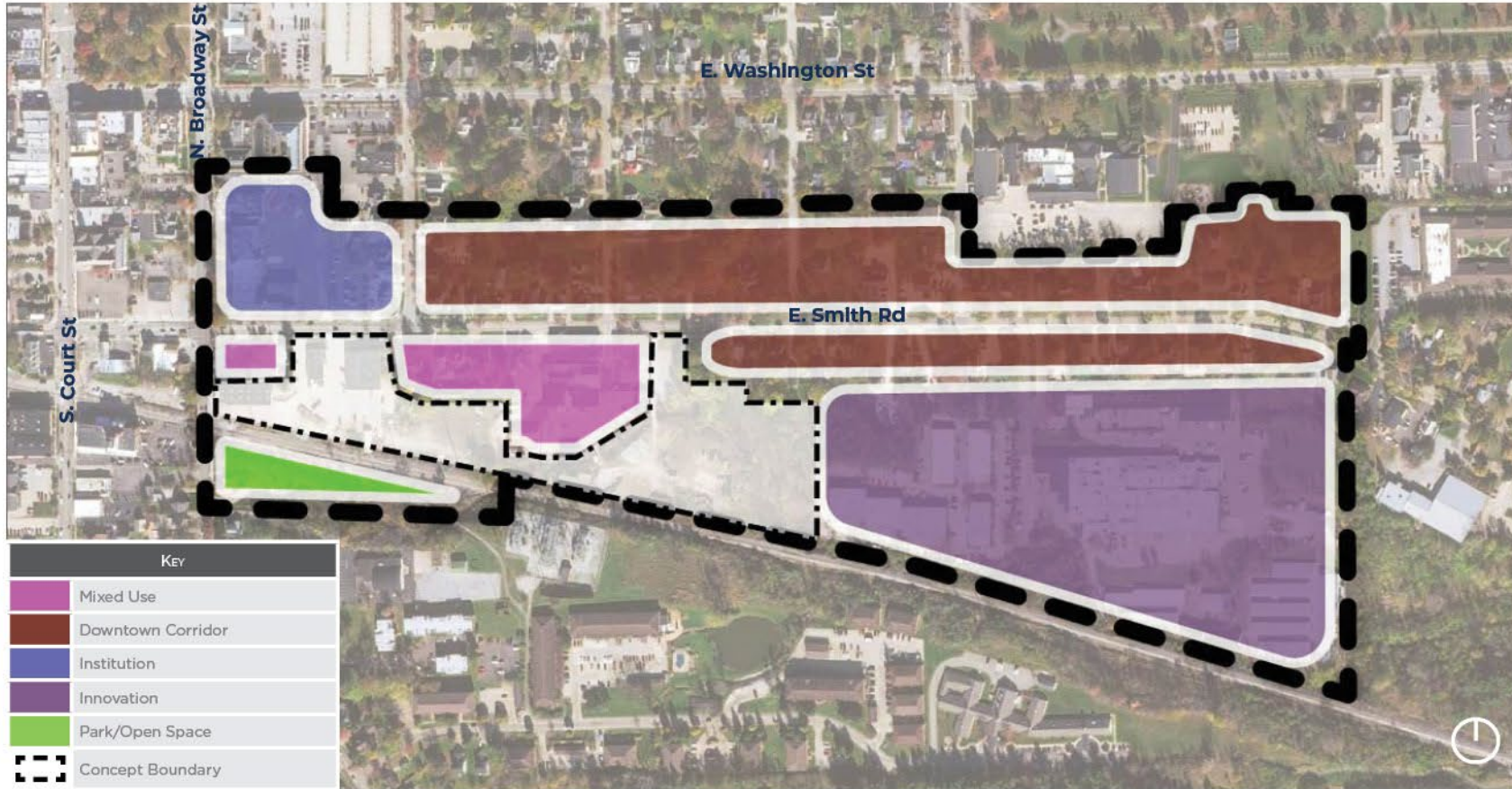


East Smith Focus Area

EAST SMITH CORRIDOR: BOUNDARY



EAST SMITH CORRIDOR: CONCEPT BOUNDARY

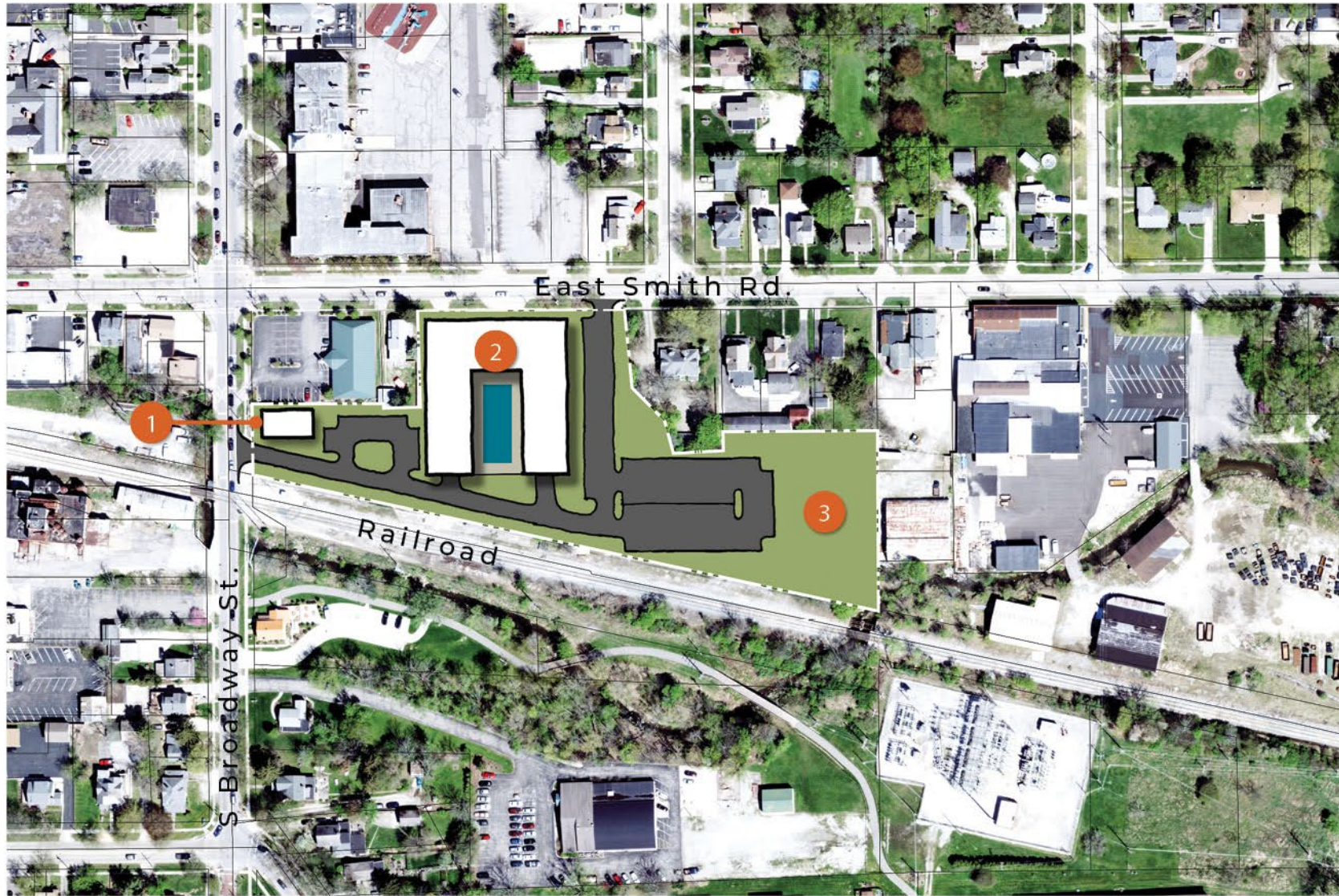


LEGEND :

- 1 Commercial (1 story)
- 2 Residential: Flats (3/4 story)
Podium Parking
3 Floors Residential
- 3 Open Space

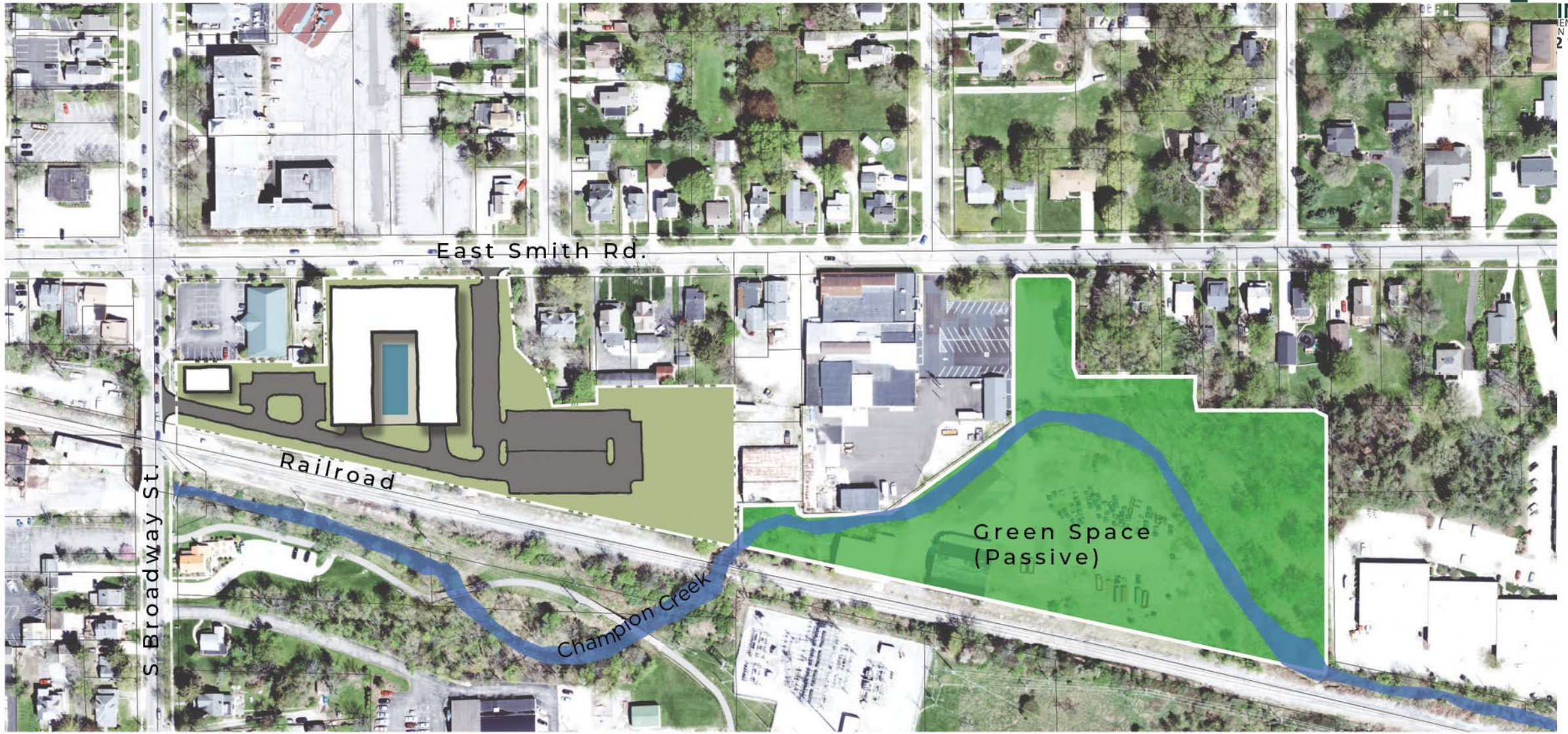
DEVELOPMENT DATA

Commercial:	± 2,800 sq.ft.
Residential Flats:	± 92 du.
Parking Required:	217 spaces
Parking Provided:	217 spaces



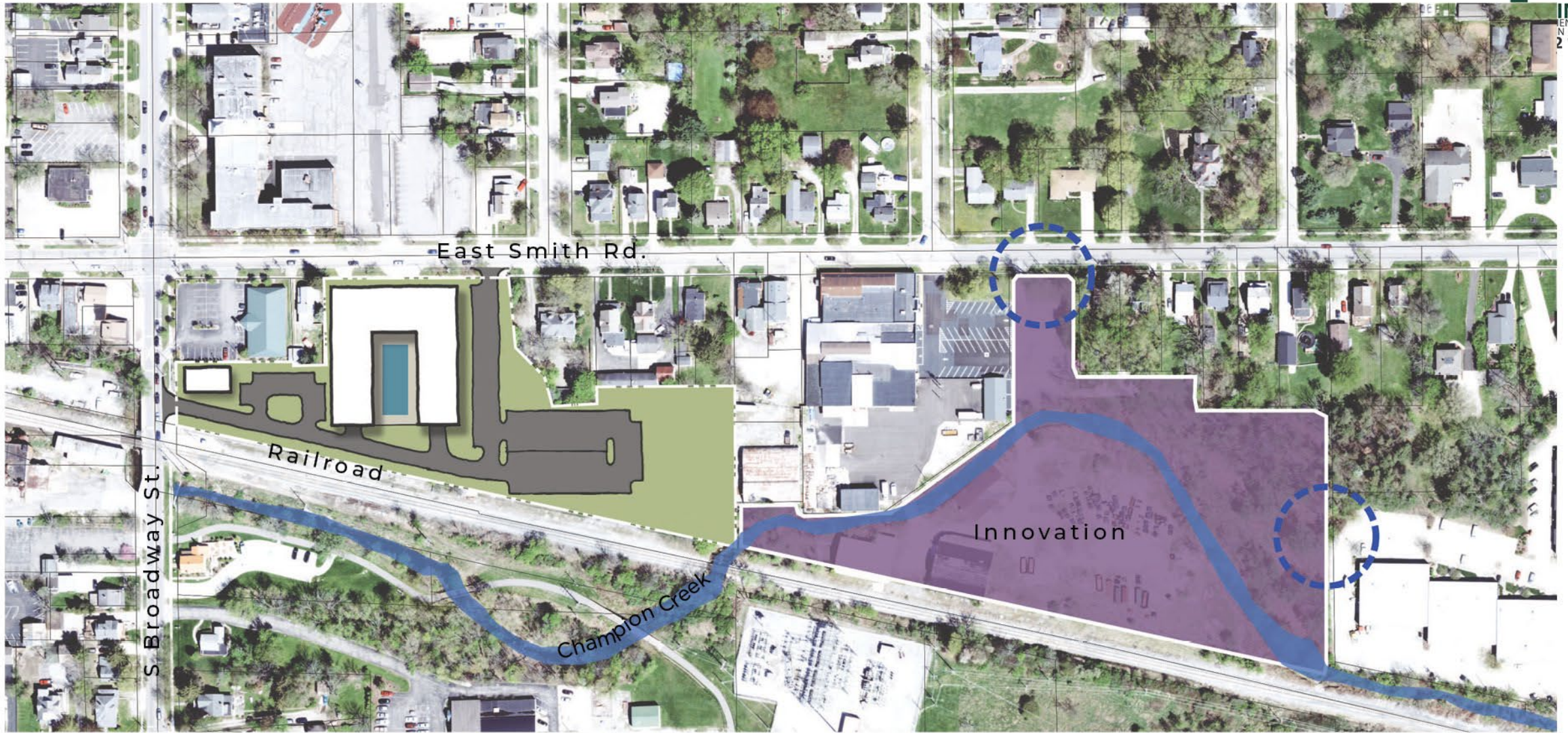
EAST SMITH CONCEPT





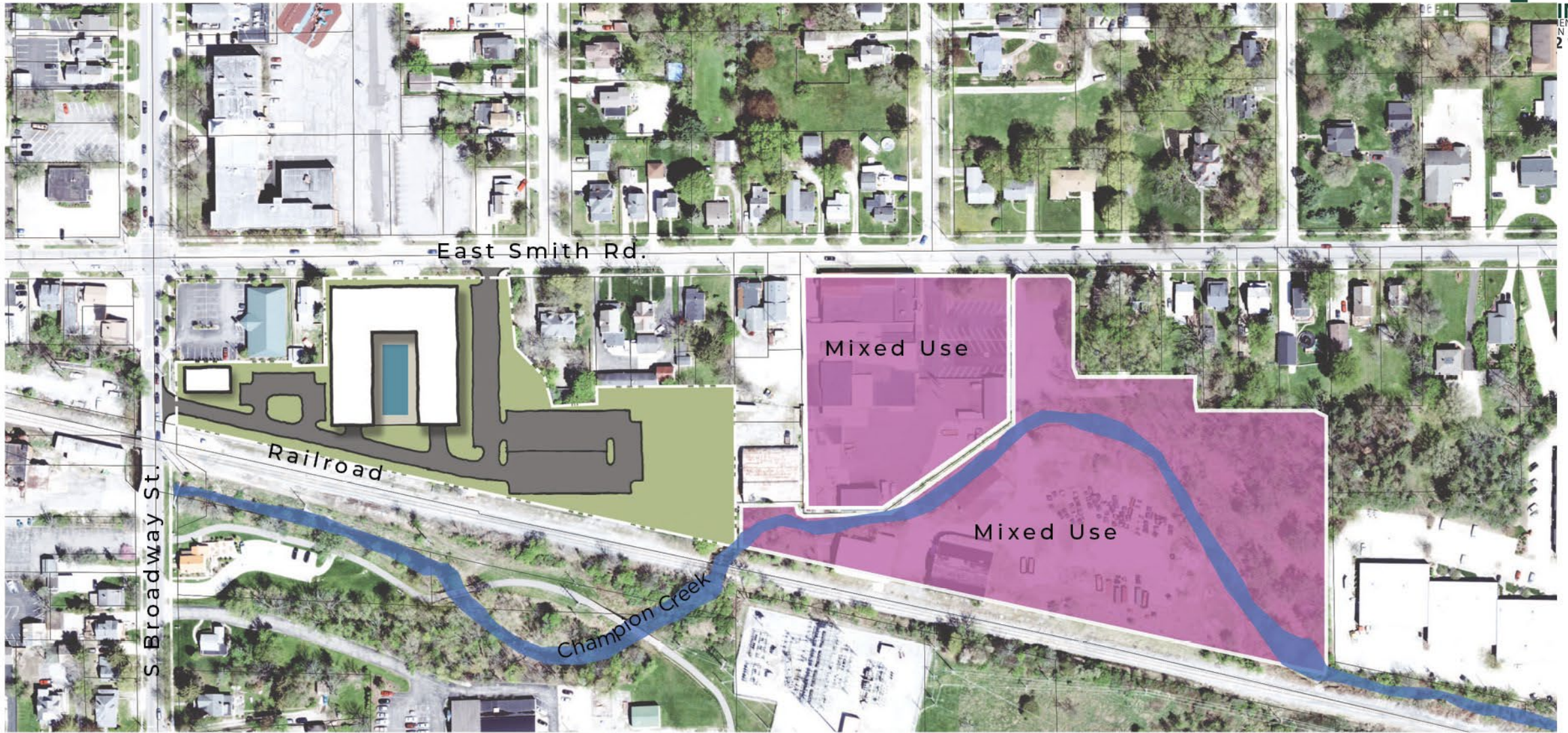
EAST SMITH CONCEPT - OPTION 1





EAST SMITH CONCEPT - OPTION 2





EAST SMITH CONCEPT - OPTION 3

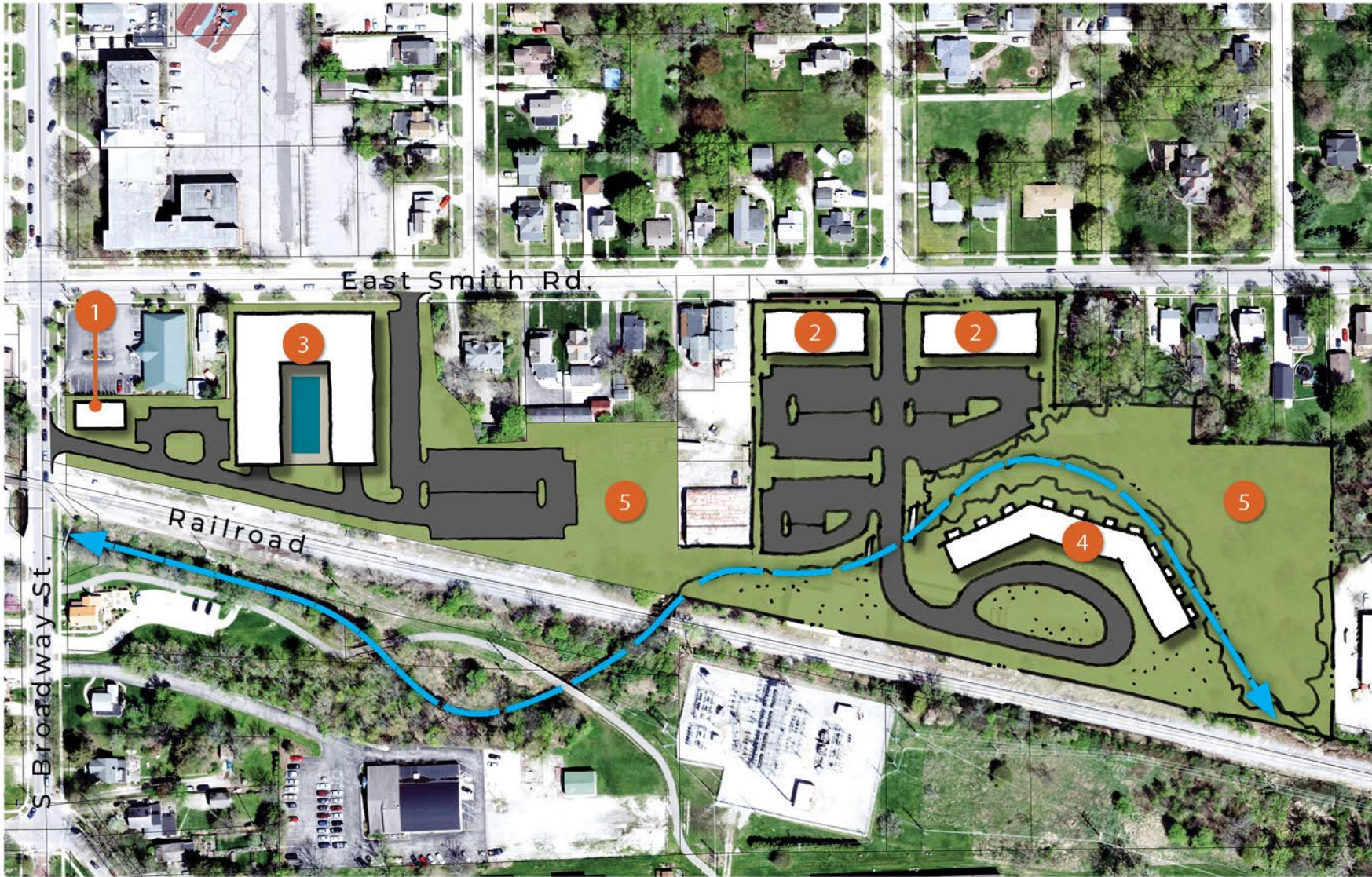


LEGEND :

- 1 Commercial (1 story)
- 2 Mixed Use (2/3 Story)
1st Flr Commercial
1/2 Floors Residential
- 3 Residential: Flats (3 story)
Podium Parking
3 Floors Residential
- 4 Townhomes
- 5 Open Space

DEVELOPMENT DATA

<u>West</u>	
Commercial:	± 2,800 sq.ft.
Residential Flats:	± 92 du.
Parking Required:	217 spaces
Parking Provided:	217 spaces
<u>East</u>	
Commercial (Retail):	± 16,800 sq.ft.
Residential Flats:	± 15 du.
Parking Required (-15% for MU):	64 spaces
Parking Provided:	130 spaces
Townhomes:	± 11 du.



EAST SMITH CONCEPT - OPTION 3



EAST SMITH CORRIDOR: CHARACTER IMAGES





South Downtown

SOUTH DOWNTOWN: BOUNDARY



South Downtown Focus Area

Focus area concepts were removed

SOUTH DOWNTOWN: FUTURE LAND USE



SOUTH DOWNTOWN: CHARACTER IMAGES



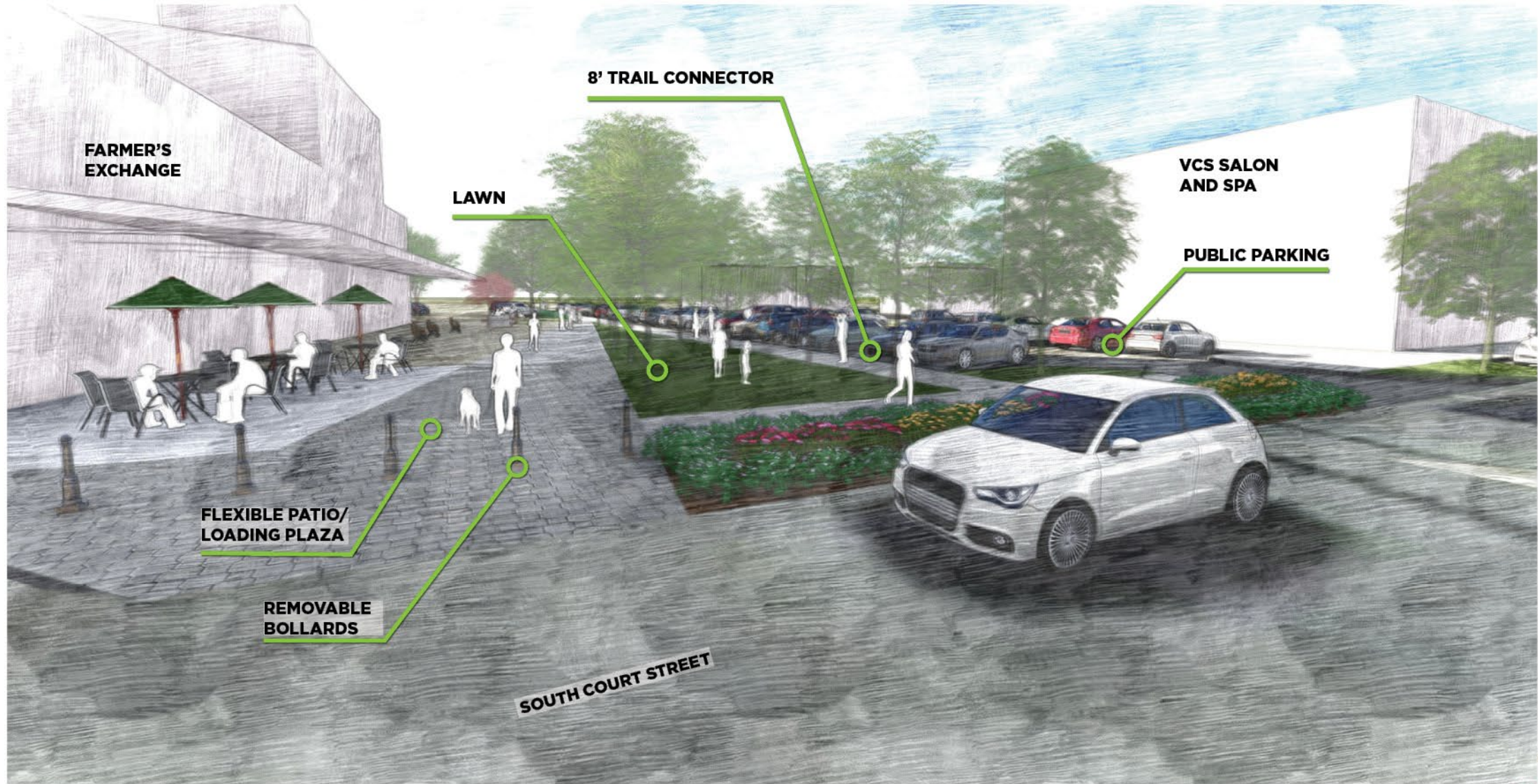
SOUTH DOWNTOWN: STREETSCAPE PLAN

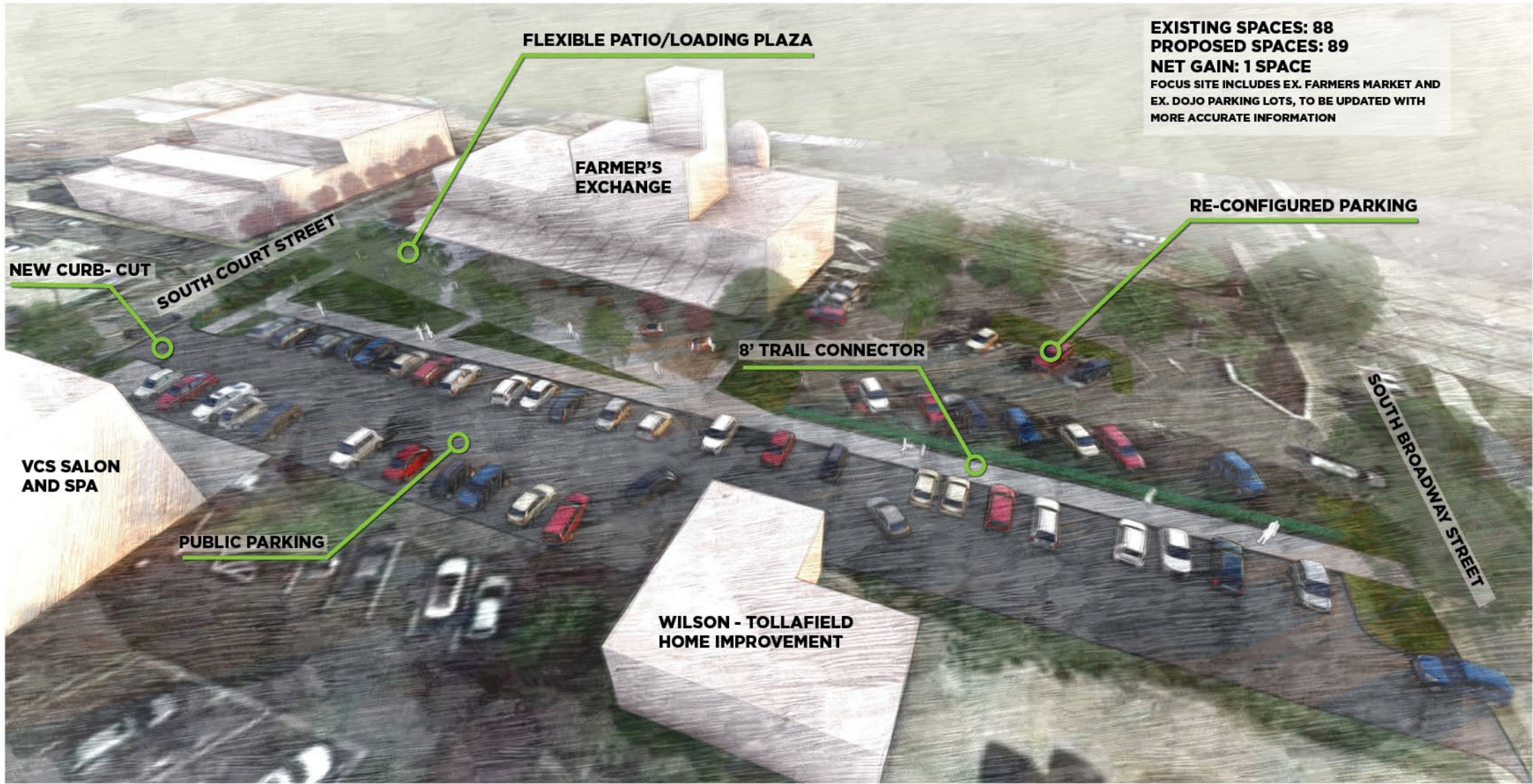


SOUTH DOWNTOWN: CHARACTER IMAGES



SOUTH DOWNTOWN: OUTDOOR PLAZA RENDERING



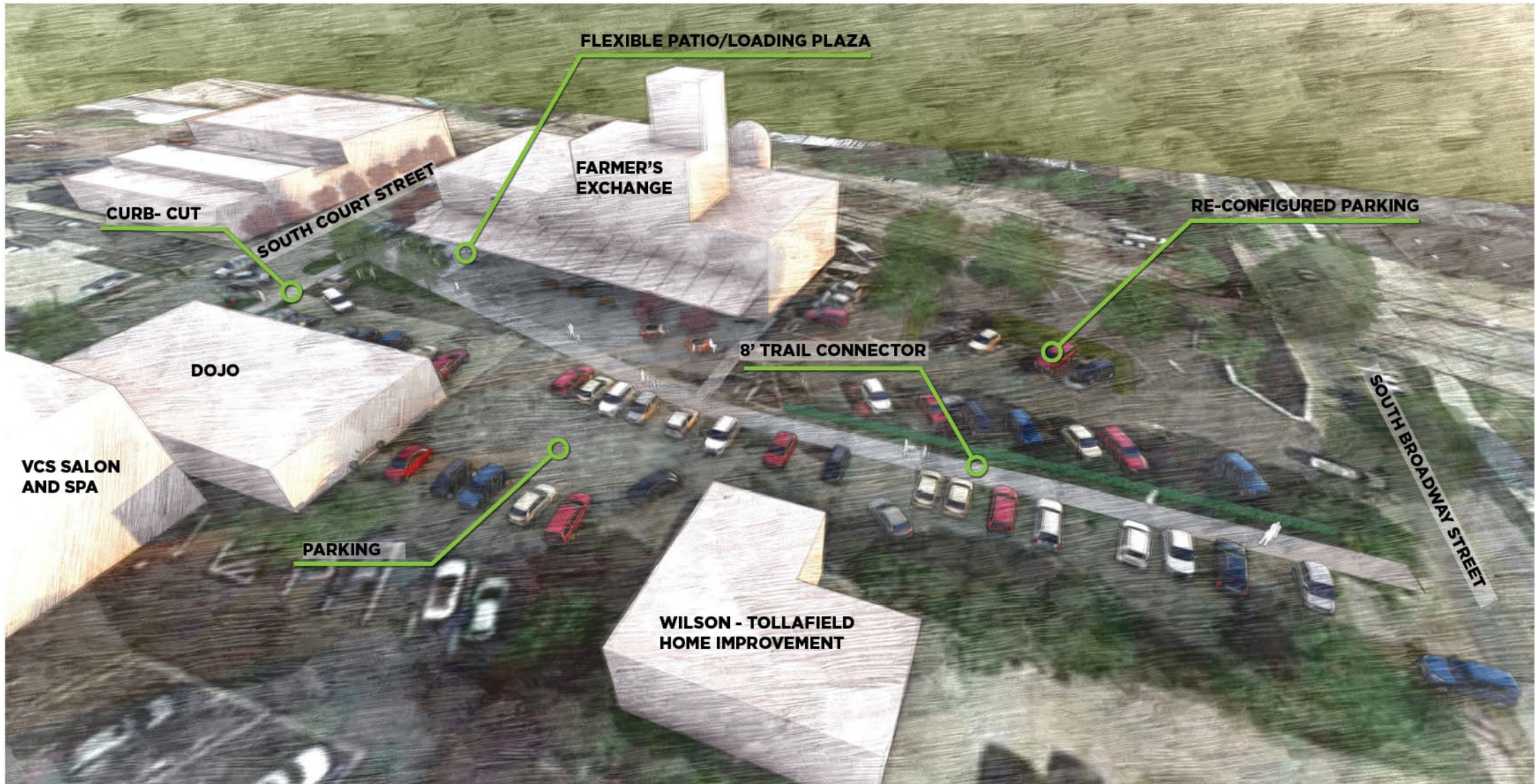


EXISTING SPACES: 88
PROPOSED SPACES: 89
NET GAIN: 1 SPACE
FOCUS SITE INCLUDES EX. FARMERS MARKET AND
EX. DOJO PARKING LOTS, TO BE UPDATED WITH
MORE ACCURATE INFORMATION

SOUTH DOWNTOWN: OUTDOOR PLAZA RENDERING

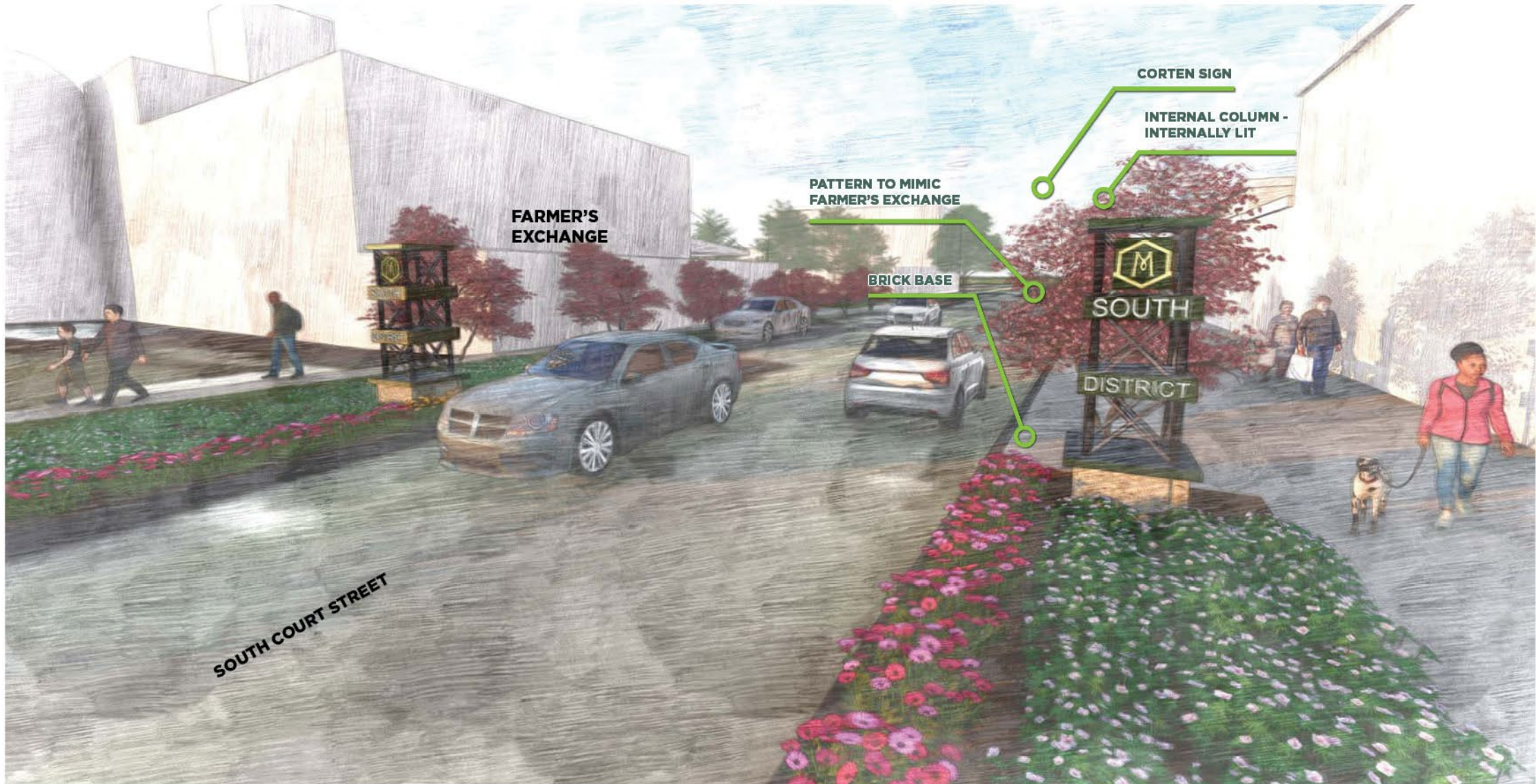
SOUTH DOWNTOWN: OUTDOOR PLAZA RENDERING - OPT. 2



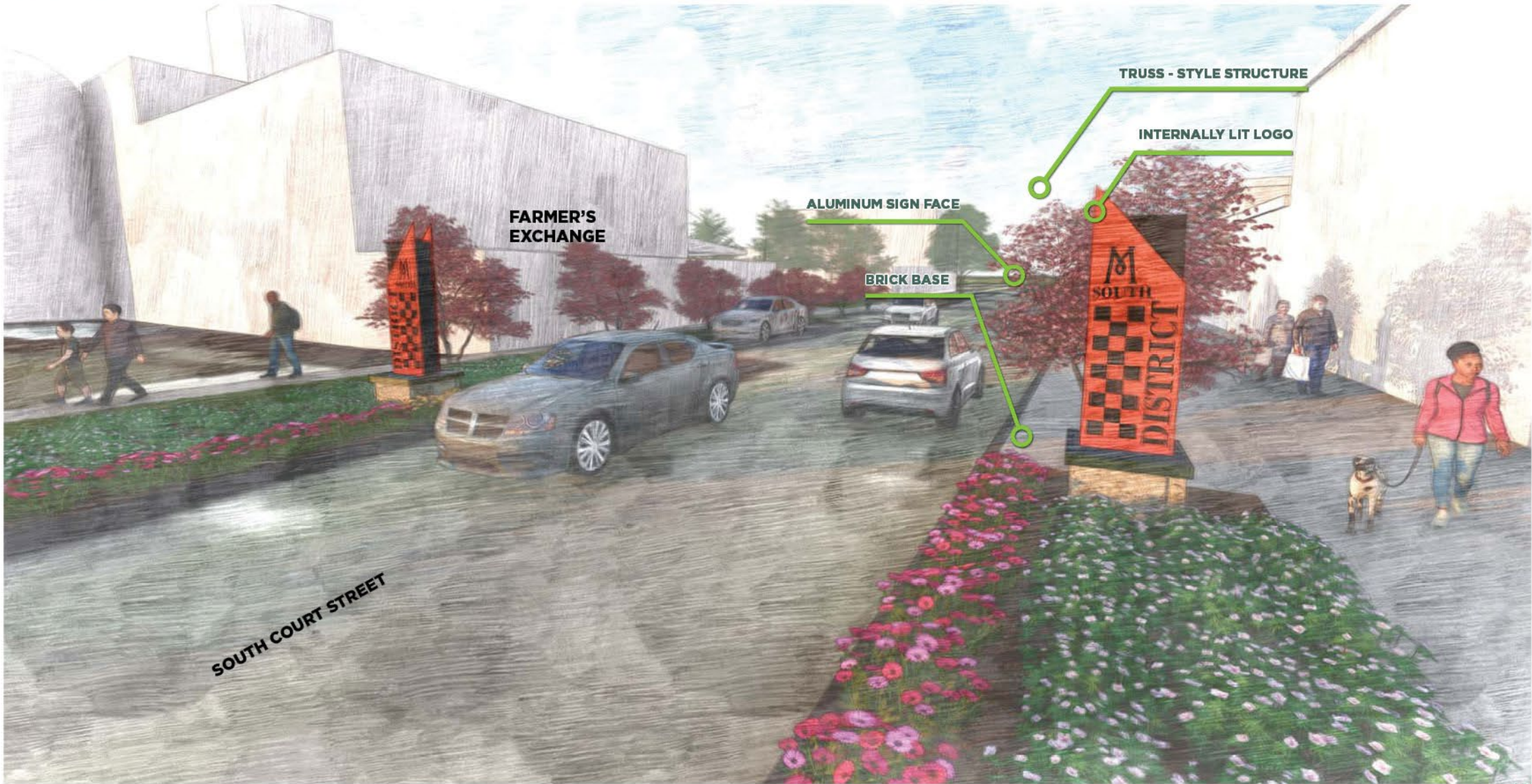


SOUTH DOWNTOWN: OUTDOOR PLAZA RENDERING - OPT. 2

SOUTH DOWNTOWN: GATEWAY SIGNAGE - OPTION 1



SOUTH DOWNTOWN: GATEWAY SIGNAGE - OPTION 2



Group Exercise

Group Exercise

Task #1 – At your table, spend 20 minutes to review the Future Land Use Map & Mobility Map from your packet.

Using sticky notes write down your comments and then place your comments on the large map.

Task #2 – Focus areas: At your table, you have a summary sheet with each focus area included. Review the concepts and write your comments directly onto the sheet.

Next Steps

Next Steps

- Updates and Revisions
 - Principles, objectives, and strategies
 - Proposed future land use map and active transportation map
 - Focus area concepts
- Community Engagement – Round 2
 - Virtual Open House & Office Hour – TBD
 - Community Survey 2
- Our next steering committee meeting will take place on TBD at 5pm in Medina City Hall.